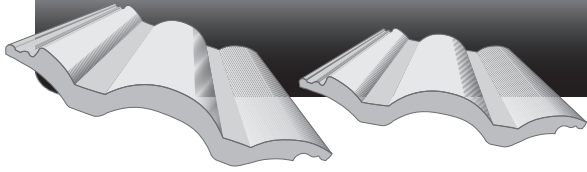


# Bold Double Roman



## TILE SPECIFICATIONS:

|                              |                 |
|------------------------------|-----------------|
| Tile Size:                   | 420 x 330mm     |
| <b>Linear Coverage</b>       |                 |
| Effective Width:             | 300mm           |
| Tile Weight/Mass:            | 4.6kg (average) |
| <b>Tiles / m<sup>2</sup></b> |                 |
| 17.5° - 25°                  | 10.42           |
| 26° Plus                     | 9.66            |
| <b>Mass / m<sup>2</sup></b>  |                 |
| 17.5° - 25°                  | 48kg            |
| 26° Plus                     | 44kg            |

## ROOFING SPECIFICATIONS:

|                                  |       |
|----------------------------------|-------|
| <b>Headlap / Overlap</b>         |       |
| 17.5° - 25°                      | 100mm |
| 26° Plus                         | 75mm  |
| <b>Rafter Centres (Maximum)</b>  |       |
| With 38 x 38mm batten            | 760mm |
| With 38 x 50mm batten fixed flat | 900mm |
| <b>Battens Centre</b>            |       |
| 17.5° - 25°                      | 320mm |
| 26° Plus                         | 345mm |

### Please Note:

- The roof structure specifications should comply with building regulations in your region.
- No allowance is made for wastage.
- Minimum roof pitch is 17.5°
- Undertile membrane mandatory 17° - 25°

|  |   |
|--|---|
| BDR ST GR<br>GR = Grey   | KEY:  |
|    | BDR = Bold Double Roman<br>ST = Standard<br>AQ = Antique                              |
| BDR ST RD<br>RD = Red  | BDR AQ RD<br>RD = Red   |
|    |    |
| BDR ST TC<br>TC = Terracotta   | BDR AQ TC<br>TC = Terracotta  |
|   |   |
| BDR ST SL<br>SL = Slate  | BDR AQ SL<br>SL = Slate   |
|  |  |
| BDR ST TAN<br>TAN = Tan  | BDR AQ TAN<br>TAN = Tan   |
|  |  |
| BDR ST BR<br>BR = Brown  | BDR AQ BR<br>BR = Brown   |
|  |  |

## PLEASE NOTE

### Colour Uniformity / Efflorescence

Due to Natural Deviations in the raw materials and the periodic occurrence of efflorescence on unprotected concrete products, absolute colour consistency on the roof cannot be guaranteed.

### Standard Throughcolour

Primary colour throughout. Colouring oxides are mixed in the concrete prior to extrusion assuring complete colour integrity for long-lasting beauty and durability. The manufacturer reserves the right to substitute the product range without notice.